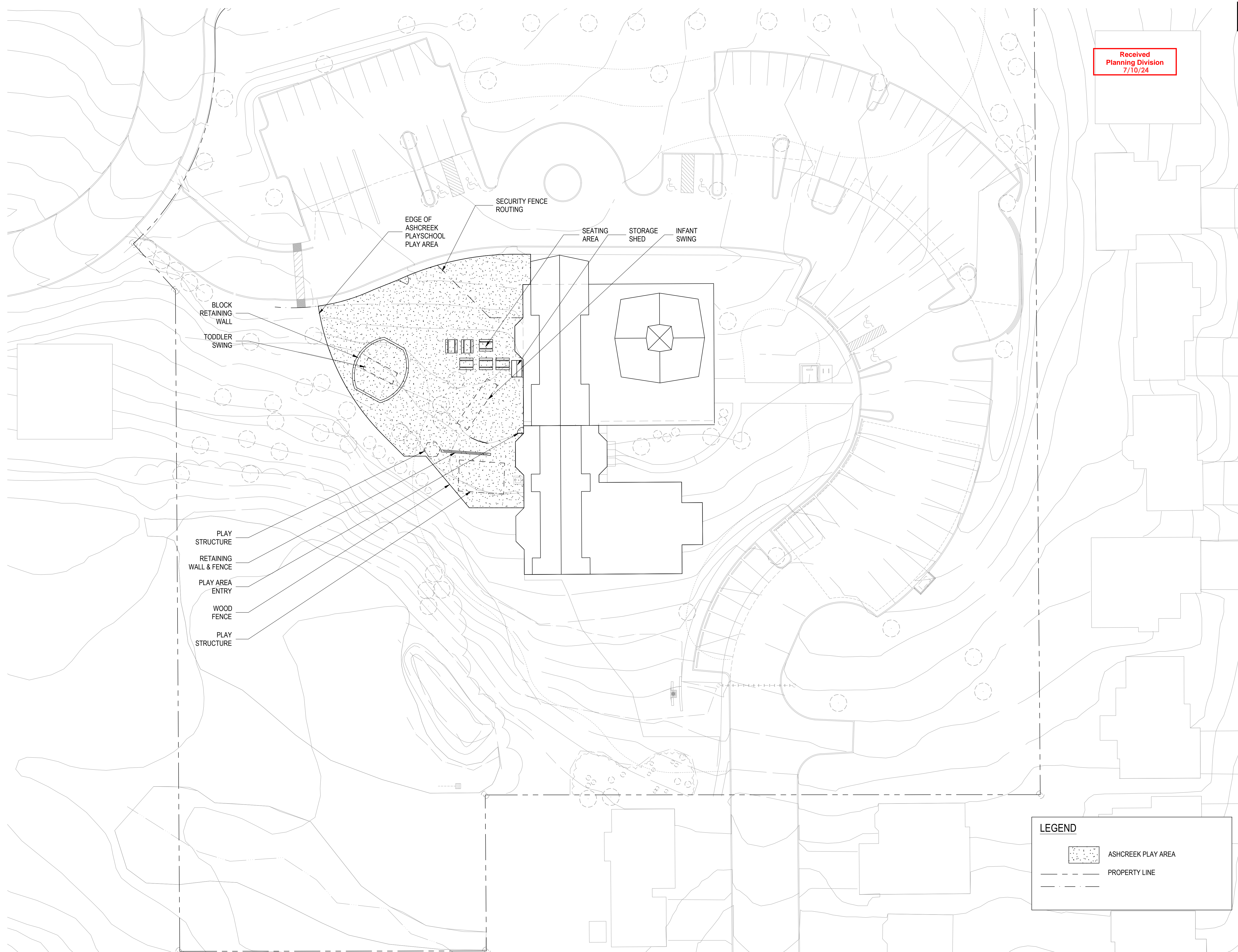


Received  
 Planning Division  
 7/10/24



- BLOCK RETAINING WALL
- TODDLER SWING
- PLAY STRUCTURE
- RETAINING WALL & FENCE
- PLAY AREA ENTRY
- WOOD FENCE
- PLAY STRUCTURE

- EDGE OF ASHCREEK PRESCHOOL PLAY AREA
- SECURITY FENCE ROUTING
- SEATING AREA
- STORAGE SHED
- INFANT SWING

**LEGEND**

- ASHCREEK PLAY AREA
- PROPERTY LINE

**MURRAY HILLS CHRISTIAN CHURCH**  
 MURRAY HILLS CHRISTIAN CHURCH PRESCHOOL  
 CUP 1994-0011 MODIFICATION

15050 SW WEIR RD, BEAVERTON, OR 97007

Date: 04/24/2023  
 Job No.: 23003.00  
 Drawn By: JB  
 Checked by: EC

Revisions		
#	Date	Description
1	01/24/24	Revision 1

SITE PLAN

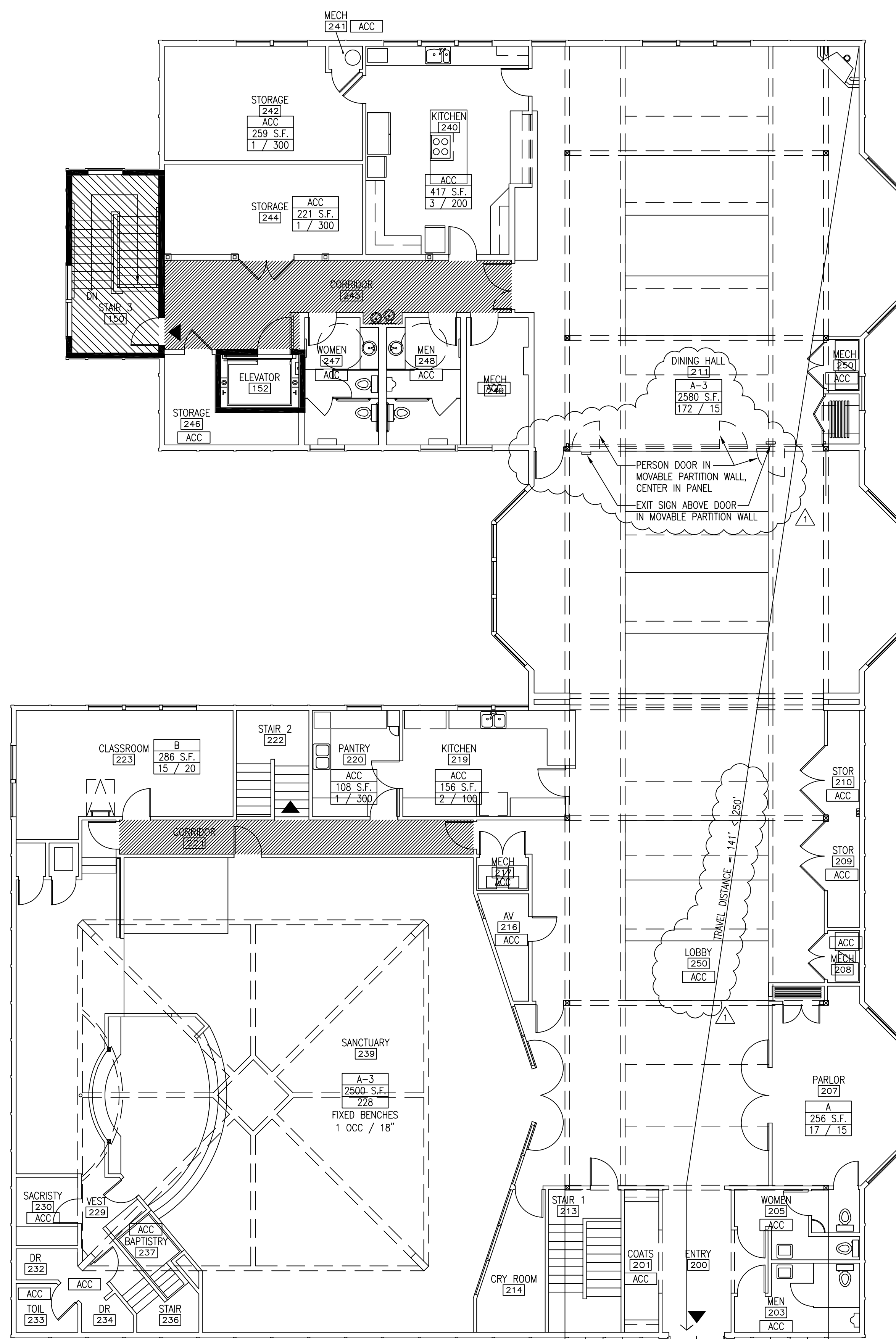
**C1.1**

**LEGEND**

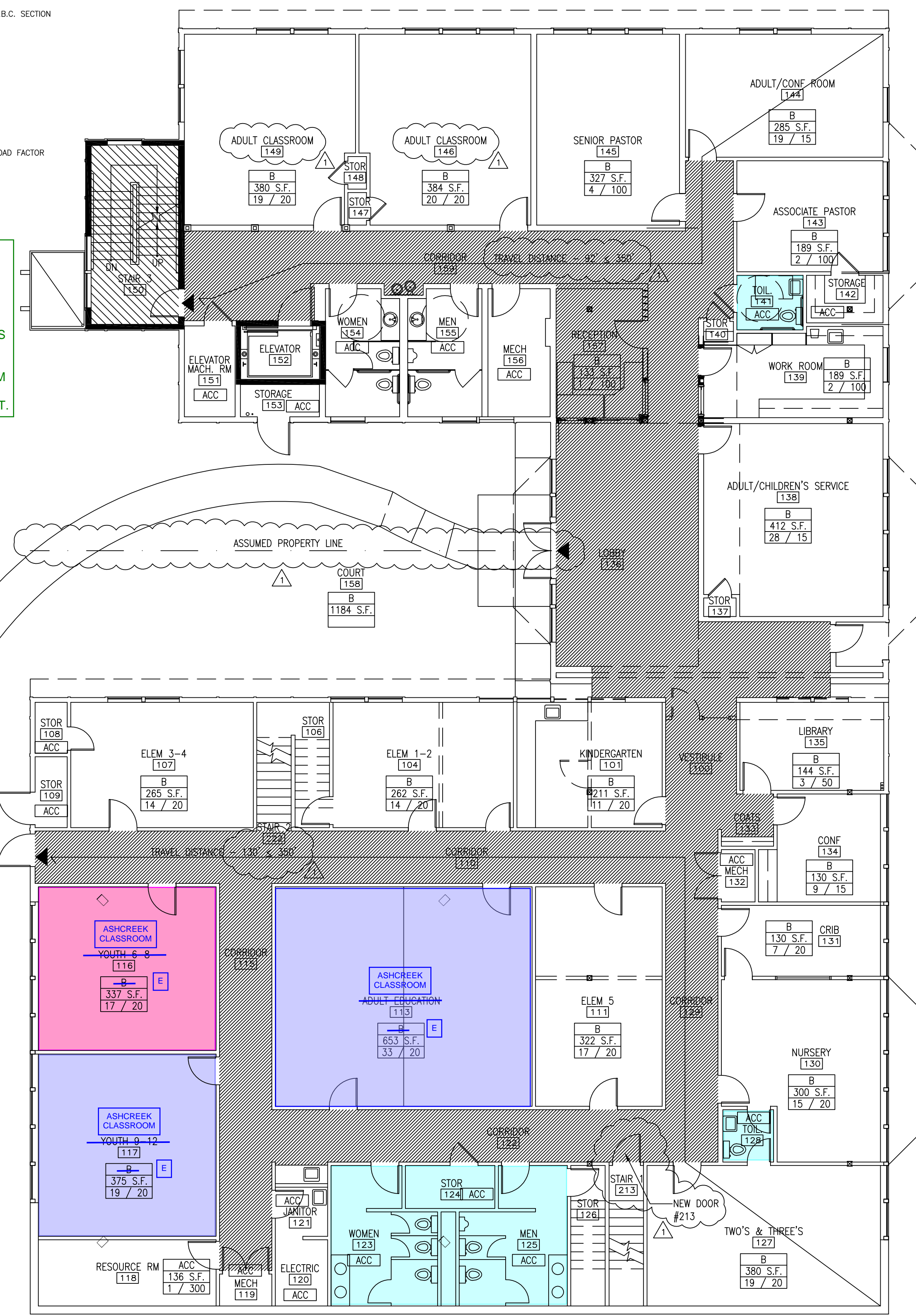
- 1-HR RATED OCCUPANCY SEPARATION WALL
- 1-HR RATED EXIT ENCLOSURE WALL (U.B.C. SECTION 1005.3.3) AND SHAFT ENCLOSURES
- HALLWAY
- EXIT ACCESS CORRIDOR
- EXIT ENCLOSURE
- OCCUPANCY CLASSIFICATION ROOM S.F. / TOTAL OCCUPANT LOAD / OCCUPANT LOAD FACTOR
- ACC: ACCESSORY USE AREA
- ▲ EGRESS ARROW

EXISTING DETAILS 1,2,3 & LEGEND FROM 2002 PERMIT SET ARE UNCHANGED AS PART OF 2023 CUP MODIFICATION AND FOR REFERENCE ONLY.

ALL INFORMATION BEING UPDATED AS PART OF 2023 CUP MODIFICATION IS SHOWN IN LOWER LEFT CORNER IN BLUE, WITH THE EXCEPTION OF ROOM NAME AND OCCUPANCY CHANGES SHOWN ON DETAILS 2 & 3, THIS SHEET.



1 UPPER LEVEL OVERALL & LIFE SAFETY PLAN  
1/8" = 1'-0"



2 LOWER LEVEL OVERALL & LIFE SAFETY PLAN  
1/8" = 1'-0"

**2023 UPDATED FLS INFORMATION FOR CUP MODIFICATION (PROVIDED FOR ASHCREEK SPACES ONLY)**

**GENERAL**  
 JURISDICTIONAL AUTHORITY  
 CITY OF BEAVERTON

**APPLICABLE CODES**  
 2022 OREGON STRUCTURAL SPECIALITY CODE  
 2022 INTERNATIONAL FIRE CODE - STATE OF OREGON

**BUILDING OCCUPANCY DATA**  
 OCCUPANCY CLASSIFICATION (SECTION 304 & 305 & 508.2)  
 B = MAIN OCCUPANCY  
 E = ACCESSORY OCCUPANCY

**OCCUPANCY SEPARATION (SECTION 508.2.4)**  
 NONE REQUIRED BETWEEN ACCESSORY AND MAIN OCCUPANCY

**OCCUPANCY LOAD (TABLE 1004.5)**  
 BASEMENT ASHCREEK: 58  
 LOWER LEVEL ASHCREEK: 69  
**TOTAL OCCUPANTS: 127**

- CUP1994-0011 ASHCREEK USE
- FUTURE ASHCREEK USE
- EXISTING RESTROOMS

CUP1994-0011 ASHCREEK USE:  
 STUDENTS = 20  
 STAFF = 2  
 SF = 700

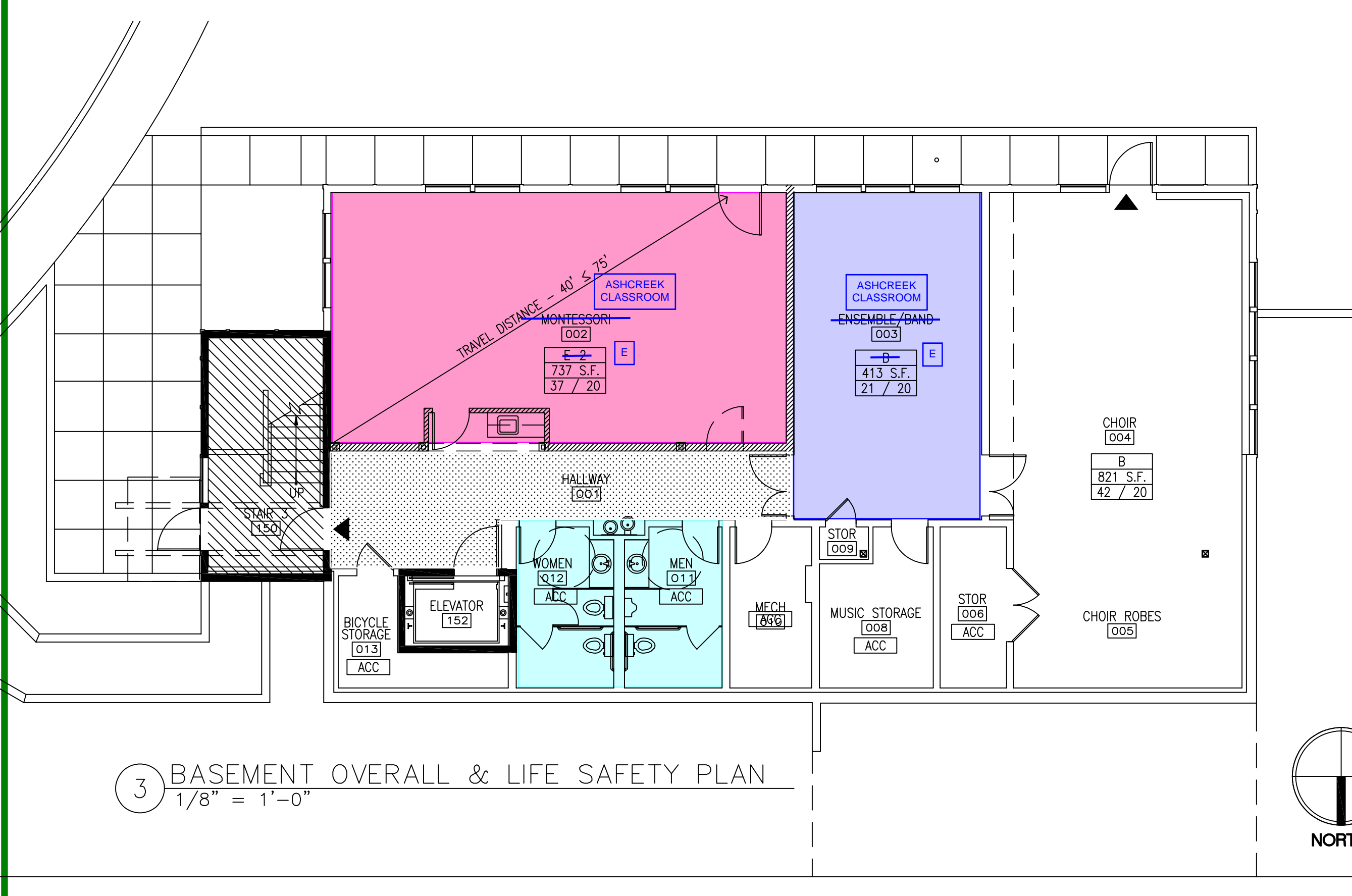
CURRENT 2023 ASHCREEK USE:  
 STUDENTS = 35  
 STAFF = 5  
 SF = 1,441

FUTURE ASHCREEK USE:  
 STUDENTS = 60  
 STAFF = 10 (4 BASEMENT, 6 LOWER LEVEL)  
 SF = 2,515

- NOTES:**
- OCCUPANT LOAD OF ASHCREEK SPACES IS UNCHANGED AS PART OF 2023 CUP MODIFICATION. THE SPACES THAT ARE CHANGING FROM B TO E OCCUPANCY WERE ORIGINALLY CALCULATED WITH A 20 NET OLF FOR EDUCATIONAL USE.
  - ROOM NAMES & OCCUPANCY UPDATED AS PART OF 2023 CUP MODIFICATION, SEE DETAIL 2 & 3 THIS SHEET.
  - UPGRADES TO AUTOMATIC FIRE SPRINKLER SYSTEM AND FIRE ALARM SYSTEM ARE DEFERRED SUBMITTALS AND BIDDER DESIGNED

ROOM NAME	ROOM NUMBER	AREA	OLF	ROOM OCCUPANT LOAD (AREA/OLF)	OCCUPANCY GROUP	FUNCTION OF SPACE TABLE 1004.5
<b>BASEMENT</b>						
ASHCREEK CLASSROOM	002	737	20	37	E	EDUCATIONAL - CLASSROOM AREA
ASHCREEK CLASSROOM	003	413	20	21	E	EDUCATIONAL - CLASSROOM AREA
<b>TOTAL ASHCREEK</b>				<b>58</b>		
<b>LOWER LEVEL</b>						
ASHCREEK CLASSROOM	113	653	20	33	E	EDUCATIONAL - CLASSROOM AREA
ASHCREEK CLASSROOM	116	337	20	17	E	EDUCATIONAL - CLASSROOM AREA
ASHCREEK CLASSROOM	117	375	20	19	E	EDUCATIONAL - CLASSROOM AREA
<b>TOTAL ASHCREEK</b>				<b>69</b>		
<b>TOTAL ASHCREEK OCCUPANTS</b>				<b>127</b>		

YGH-INTEGRUS ARCHITECTURE



3 BASEMENT OVERALL & LIFE SAFETY PLAN  
1/8" = 1'-0"

**LIFE SAFETY CODE SUMMARY**

JURISDICTION AUTHORITY: CITY OF BEAVERTON / STATE OF OREGON

APPLICABLE CODES:  
 UNIFORM BUILDING CODE 1997 EDITION  
 1998 OREGON AMENDMENTS  
 2000 OREGON AMENDMENTS

OCCUPANCY TYPES:  
 A-3 SANCTUARY, FELLOWSHIP HALL  
 B SMALL CAPACITY CLASSROOMS, OFFICES, ETC.  
 E-2 EDUCATION FOR LESS THAN 50 PERSONS

CONSTRUCTION TYPE:  
 EXISTING BUILDING: TYPE V-1 HR (BY AUTOMATIC SPRINKLER SYSTEM, SECTION 508)  
 NEW ADDITION: TYPE V-1 HR (BY AUTOMATIC SPRINKLER SYSTEM, SECTION 508)

EXISTING FLS CODE SUMMARY FROM 2002 PERMIT SET - FOR REFERENCE ONLY

**ALLOWABLE AREAS:**

**ONE-STORY BUILDING:**

OCCUPANCY:	A-3	B	E-2
BASIC ALLOWABLE AREA (TABLE 5-8):	10,500	14,000	15,700
BASIC ALLOWABLE HEIGHT (TABLE 5-8):	2	3	2
AREA INCREASES - FOR ANY SINGLE LEVEL SEPARATION ON ALL SIDES (505.1.3)	+100%	+100%	+100%
<b>TOTAL ALLOWABLE BUILDING AREA:</b>	<b>21,000</b>	<b>28,000</b>	<b>31,400</b>

**TWO-STORY BUILDING:**

OCCUPANCY:	A-3	B	E-2
BASIC ALLOWABLE AREA (TABLE 5-8):	10,500	14,000	15,700
BASIC ALLOWABLE HEIGHT (TABLE 5-8):	2	3	2
AREA INCREASES - FOR ANY SINGLE LEVEL SEPARATION ON ALL SIDES (505.1.3)	+100%	+100%	+100%
INCREASE FOR MULTI-STORY BUILDING (504.2):	+100%	+100%	+100%
<b>TOTAL ALLOWABLE BUILDING AREA:</b>	<b>42,000</b>	<b>56,000</b>	<b>62,800</b>

**ALLOWABLE AREA (UPPER LEVEL):**  
 ACTUAL AREA, ONE-STORY (A-3) = 10,692 SF (A-3)  
 ALLOWABLE AREA, ONE-STORY (A-3) = 21,000 SF (A-3) = .51 < 1

**ALLOWABLE AREA (LOWER LEVEL):**  
 ACTUAL AREA, ONE-STORY (B) = 10,190 SF (BUILDING) + 1,184 (COURTYARD) (B) = 11,374 SF (B)  
 ALLOWABLE AREA, ONE-STORY (B) = 28,000 SF (B) = .41 < 1

**BASEMENT EXCLUDED FROM TOTAL ALLOWABLE AREA (U.B.C. SECTION 504.5):**  
 ACTUAL AREA (B) + ACTUAL AREA (E-2) = 2,486 SF (B) + 237 SF (E-2) = 2,723 SF (B/E-2)  
 ALLOWABLE AREA (B) + ALLOWABLE AREA (E-2) = 28,000 SF (B) + 13,400 SF (E-2) = 41,400 SF (B/E-2) = .15 < 1

**ALLOWABLE AREA (ENTIRE BUILDING) (U.B.C. SECTION 504.2 & 504.3):**  
 ACTUAL AREA (A-3) + ACTUAL AREA (B) = 10,692 SF (A-3) + 11,374 SF (B) = 22,066 SF (A-3/B)  
 ALLOWABLE AREA (A-3) + ALLOWABLE AREA (B) = 42,000 SF (A-3) + 56,000 SF (B) = 98,000 SF (A-3/B) = .45 < 1

**ESTIMATED OCCUPANT LOADS & EGRESS:**

LEVEL	OCC LD	FACTOR	WIDTH	NO. EXITS	WIDTH	EXIT TYPE
UPPER LEVEL	440	x 0.2 =	89 IN	= 3	= 30 IN	DOORS, CORRIDORS
		x 0.3 =	132 IN	= 3	= 44 IN	STAIRS
LOWER LEVEL	271	x 0.2 =	55 IN	= 3	= 19 IN	DOORS, CORRIDORS
		x 0.3 =	82 IN	= 3	= 28 IN	STAIRS
BASEMENT	100	x 0.2 =	20 IN	= 2	= 10 IN	DOORS

NOTE: USE EXIT WIDTH CALCULATED OR CODE MINIMUM, WHICHEVER IS GREATER

**TRAVEL DISTANCE:**  
 (U.B.C. SECTION 1004.2.5.2.2) FOR SPRINKLERED BUILDINGS, TRAVEL DISTANCE SHALL NOT EXCEED 250 FT.  
 (U.B.C. SECTION 1004.2.5.2.3) USING A CORRIDOR MAY INCREASE THE TRAVEL DISTANCE UP TO 100 FT.  
 (U.B.C. SECTION 1007.3.3.1) FOR "E" OCCUPANCY, THE TRAVEL DISTANCE FROM ANY POINT IN A ROOM SHALL NOT EXCEED 75 FEET TO A CORRIDOR OR AN EXIT.

**REQUIRED OCCUPANCY SEPARATIONS:**  
 A-3 TO B: NONE  
 A-3 TO E: NONE  
 B TO E: 1 HR

**EXTERIOR WALLS (TABLE 5-A):**  
 TYPE: V-1 HR

TYPE	BEARING	NON-BEARING	OPENINGS
A-3	TWO-HOUR LESS THAN 5' ONE-HOUR ELSEWHERE	TWO-HOUR LESS THAN 5' ONE-HOUR ELSEWHERE	NOT PERMITTED LESS THAN 5' PROTECTED LESS THAN 10'
B	ONE-HOUR	ONE-HOUR	NOT PERMITTED LESS THAN 5' PROTECTED LESS THAN 10'
E-2	TWO-HOUR LESS THAN 5' ONE-HOUR ELSEWHERE	TWO-HOUR LESS THAN 5' ONE-HOUR ELSEWHERE	NOT PERMITTED LESS THAN 5' PROTECTED LESS THAN 10'

**FIRE RESISTIVE RATINGS (URC 5A & 6A) V-1 HR:**  
 SHAFT ENCLOSURES: 1 HR  
 EXIT ENCLOSURES: 1 HR  
 ALL OTHER BUILDING ELEMENTS: 1 HR, ACHIEVED BY AUTOMATIC SPRINKLER SYSTEM FIRE-RESISTIVE SUBSTITUTION (SECTION 508)

**SANITATION SYSTEMS & PLUMBING FIXTURES:**

LEVEL	AREA - OCC CALCS	REGD MEN	REGD WOMEN	PROVIDED MEN	PROVIDED WOMEN
UPPER LEVEL	GROUP A - WORSHIP PLACE 228 FIXED SEATS = 114M & 114W	1 WC 5 LAV	2 WC 1 LAV		
LOWER LEVEL	GROUP A - WORSHIP PLACE EDUCATIONAL AND ACTIVITY UNIT 4,852 SF @ 30 OCC = 81M & 81W	1 WC 5 LAV	1 WC 1 LAV	2 WC, 2 UR 2 LAV	4 WC 3 LAV
BASEMENT	GROUP A - WORSHIP PLACE EDUCATIONAL AND ACTIVITY UNIT 1,220 SF @ 30 OCC = 22M & 22W	1 WC 5 LAV	1 WC 1 LAV	1 WC, 1 UR 1 LAV	2 WC 1 LAV
	GROUP E - SCHOOL, FOR STUDENT USE 760 SF @ 50 OCC = 8M & 8W	1 WC 5 LAV	1 WC 1 LAV		
<b>TOTAL:</b>		<b>2 WC 1 LAV</b>	<b>2 WC 2 LAV</b>	<b>3 WC, 2 UR 2 LAV</b>	<b>5 WC 3 LAV</b>

\*ONE ADDITIONAL UNI-SEX TOILET AND LAVATORY IS PROVIDED ON THE UPPER LEVEL AND TWO ADDITIONAL UNI-SEX TOILETS AND LAVATORIES ARE PROVIDED ON THE LOWER LEVEL.

NOTE: UBC A-29-A: (5) WHERE URINALS ARE PROVIDED, THE NUMBER OF WC'S SHALL NOT BE REDUCED TO LESS THAN 50% OF THE MINIMUM SPECIFIED.

**ACCESSIBLE PARKING:** (SEE SITE PLAN, SHEET 01.1)

PARKING SPACES REQUIRED: N/A  
 PARKING SPACES PROVIDED: 99  
 ACCESSIBLE PARKING SPACES REQUIRED: 4  
 ACCESSIBLE PARKING SPACES PROVIDED: 6

Received  
 Planning Division  
 7/10/24

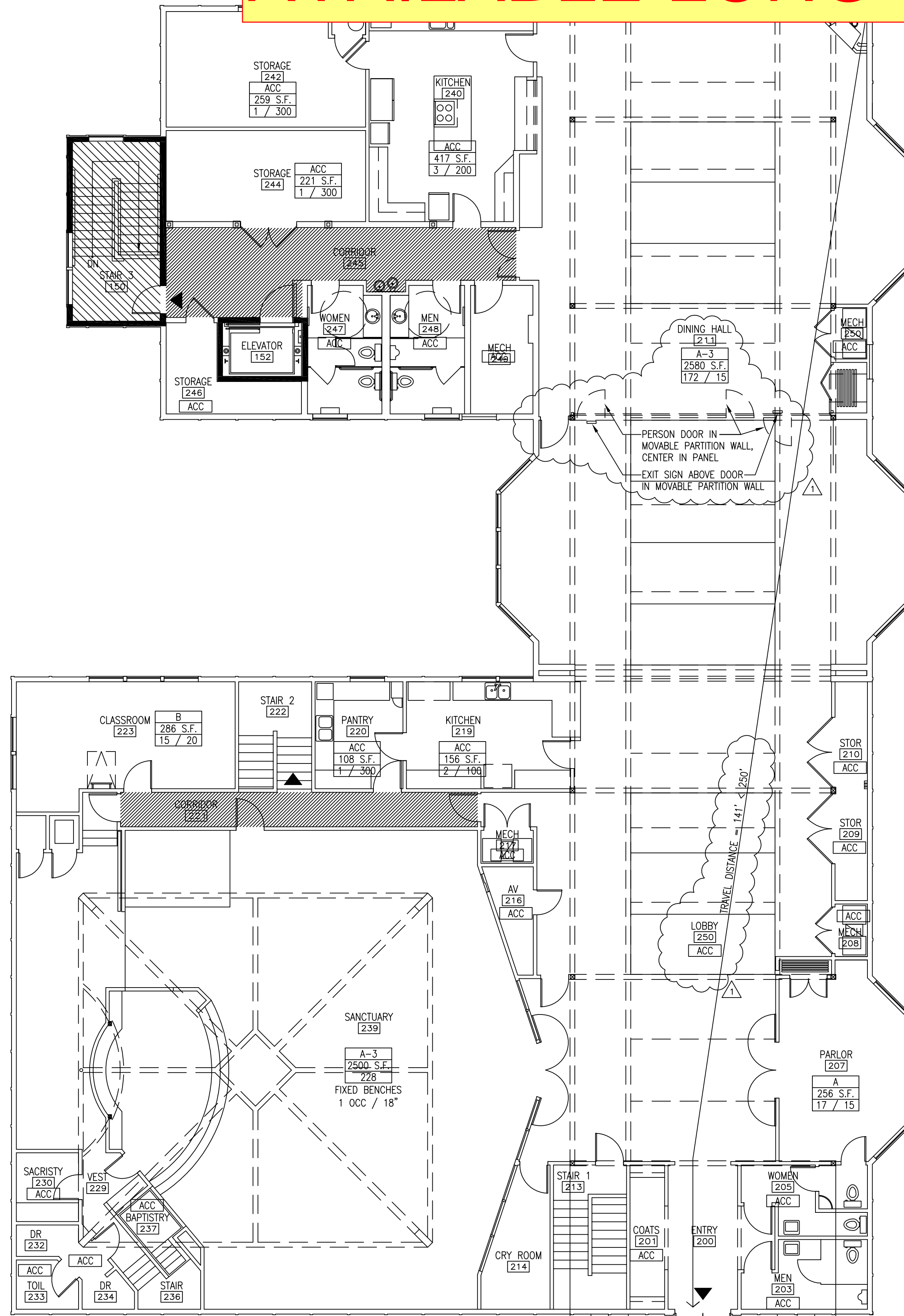
Consultant  
 Murray Hills Christian Church  
 1211 SW 5th Ave, Suite 2700  
 Portland, Oregon 97204-3782 USA  
 Tel: 503.221.0150 Fax: 503.295.0840

Owner  
 Murray Hills Christian Church  
 Building Addition

Project  
 Building Permit Plans Review  
 August 2, 2002

Revisions  
 Sheet Title  
 LIFE/SAFETY PLAN  
 Drawing No.  
 A0.31  
 Scale/16 = 1'-0"  
 Date 06.21.02  
 Project No. 47010

# AVAILABLE LONG TERM BIKE PARKING OPTIONS

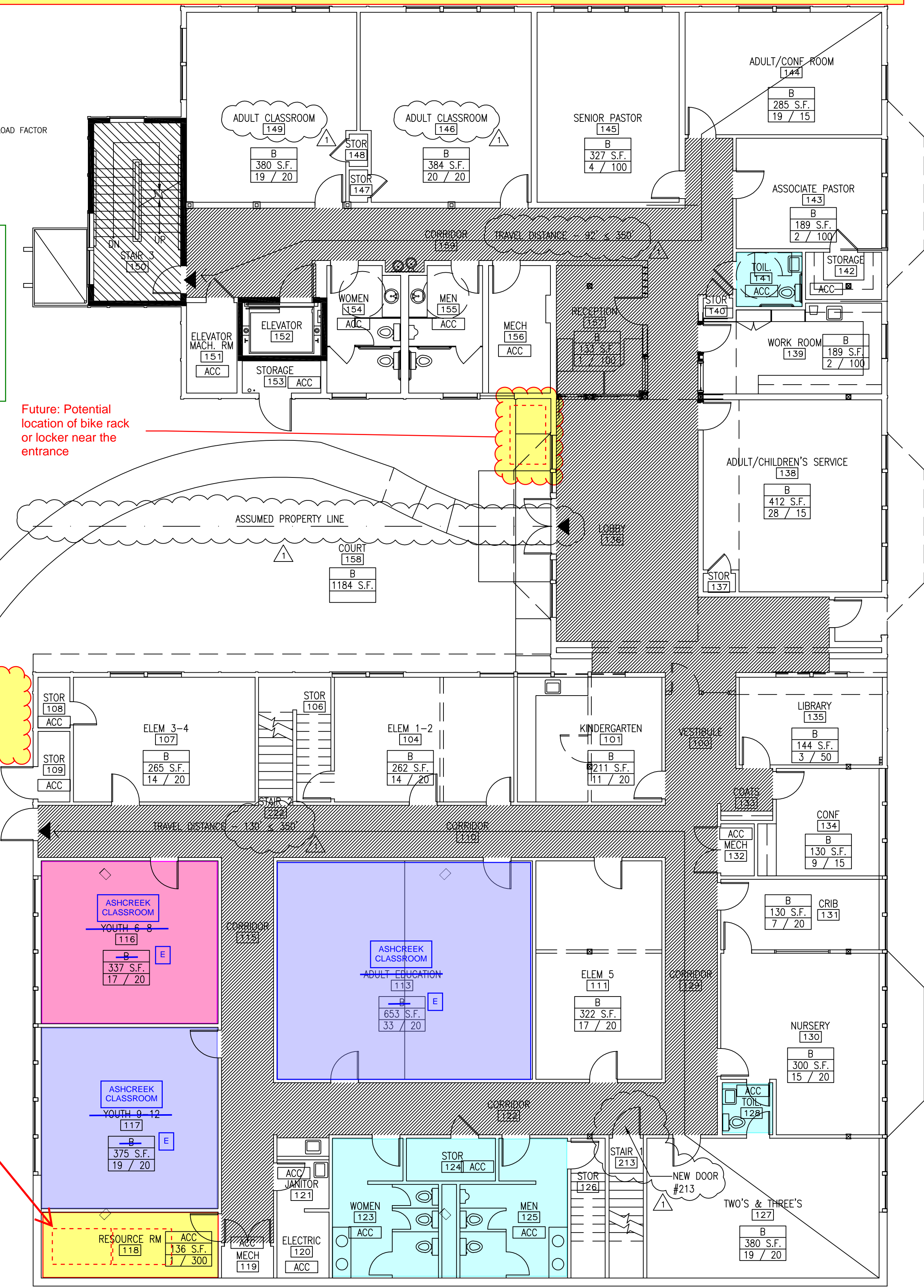


1 UPPER LEVEL OVERALL & LIFE SAFETY PLAN  
1/8" = 1'-0"

EXISTING DETAILS 1.2.3 & LEGEND FROM 2002 PERMIT SET ARE UNCHANGED AS PART OF 2023 CUP MODIFICATION AND FOR REFERENCE ONLY.

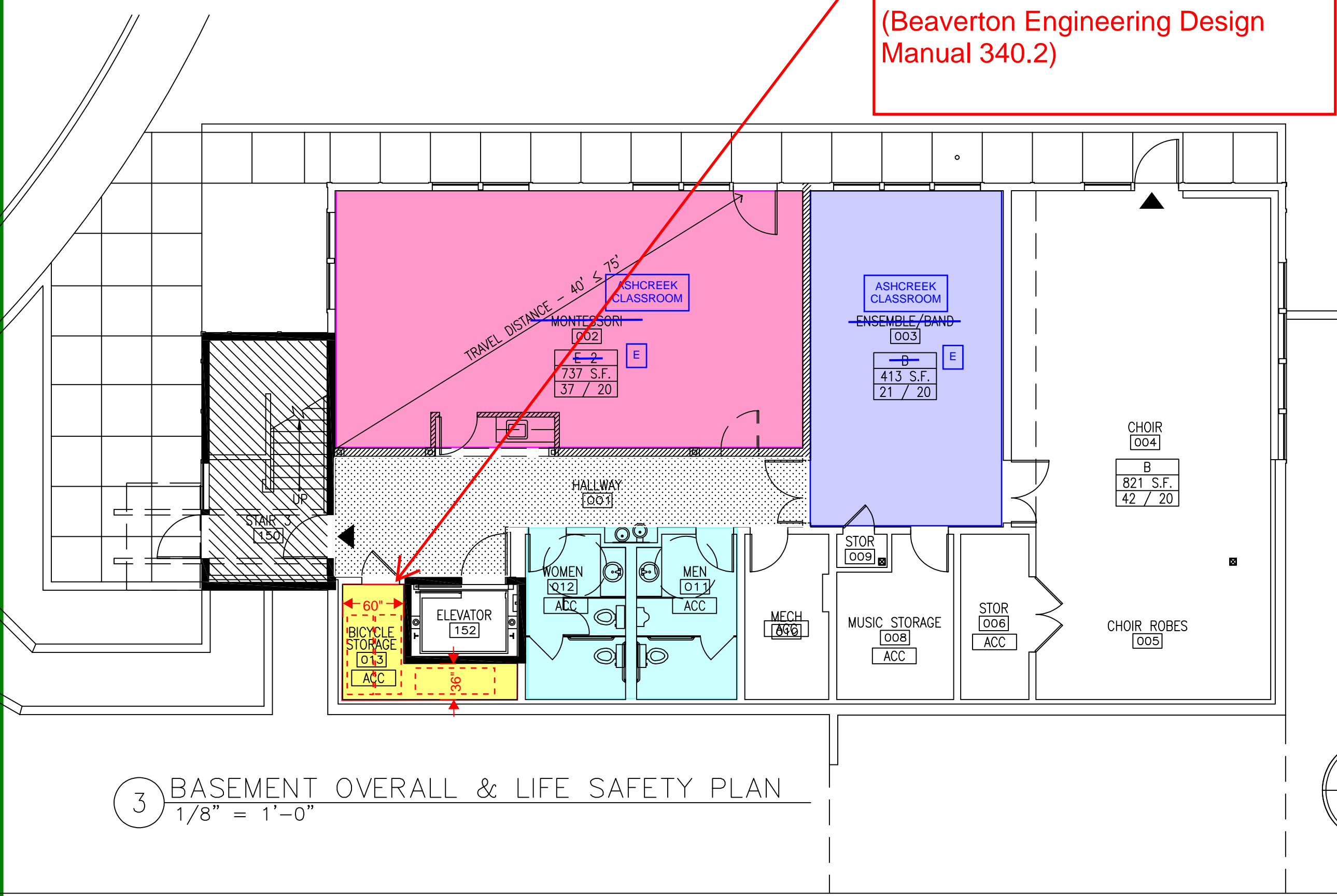
ALL INFORMATION BEING UPDATED AS PART OF 2023 CUP MODIFICATION IS SHOWN IN LOWER LEFT CORNER IN BLUE, WITH THE EXCEPTION OF ROOM NAME AND OCCUPANCY CHANGES SHOWN ON DETAILS 2 & 3, THIS SHEET.

2 bikes could be stored in the Resource Room (closet), which is a locked space with keys accessible to Ashcreek staff and volunteers (Assuming 6'x4' space per Beaverton Engineering Design Manual 340.2)



2 LOWER LEVEL OVERALL & LIFE SAFETY PLAN  
1/8" = 1'-0"

3 bikes could be stored designated bike storage room, using minimum bike rack clear zones of 2' x 6' (Beaverton Engineering Design Manual 340.2)



3 BASEMENT OVERALL & LIFE SAFETY PLAN  
1/8" = 1'-0"

### 2023 UPDATED FLS INFORMATION FOR CUP MODIFICATION (PROVIDED FOR ASHCREEK SPACES ONLY)

**GENERAL**  
 JURISDICTIONAL AUTHORITY: CITY OF BEAVERTON

**APPLICABLE CODES**  
 2022 OREGON STRUCTURAL SPECIALITY CODE  
 2022 INTERNATIONAL FIRE CODE - STATE OF OREGON

**BUILDING OCCUPANCY DATA**

OCCUPANCY CLASSIFICATION (SECTION 304 & 305 & 508.2)  
 B = MAIN OCCUPANCY  
 E = ACCESSORY OCCUPANCY

OCCUPANCY SEPARATION (SECTION 508.2.4)  
 NONE REQUIRED BETWEEN ACCESSORY AND MAIN OCCUPANCY

OCCUPANCY LOAD (TABLE 1004.5)  
 BASEMENT ASHCREEK: 58  
 LOWER LEVEL ASHCREEK: 69  
**TOTAL OCCUPANTS: 127**

ROOM NAME	ROOM NUMBER	AREA	OLF	ROOM OCCUPANT LOAD (AREA/OLF)	OCCUPANCY GROUP	FUNCTION OF SPACE TABLE 1004.5
ASHCREEK CLASSROOM	002	737	20	37	E	EDUCATIONAL - CLASSROOM AREA
ASHCREEK CLASSROOM	003	413	20	21	E	EDUCATIONAL - CLASSROOM AREA
<b>TOTAL ASHCREEK</b>				<b>58</b>		
<b>LOWER LEVEL</b>						
ASHCREEK CLASSROOM	113	653	20	33	E	EDUCATIONAL - CLASSROOM AREA
ASHCREEK CLASSROOM	116	337	20	17	E	EDUCATIONAL - CLASSROOM AREA
ASHCREEK CLASSROOM	117	375	20	19	E	EDUCATIONAL - CLASSROOM AREA
<b>TOTAL ASHCREEK</b>				<b>69</b>		
<b>LOWER LEVEL OCCUPANTS</b>				<b>69</b>		
<b>TOTAL ASHCREEK OCCUPANTS</b>				<b>127</b>		

**CUP1994-0011 ASHCREEK USE:**  
 STUDENTS = 20  
 STAFF = 2  
 SF = 700

**CURRENT 2023 ASHCREEK USE:**  
 STUDENTS = 35  
 STAFF = 5  
 SF = 1,441

**FUTURE ASHCREEK USE:**  
 STUDENTS = 60  
 STAFF = 10 (4 BASEMENT, 6 LOWER LEVEL)  
 SF = 2,515

**NOTES:**  
 1. OCCUPANT LOAD OF ASHCREEK SPACES IS UNCHANGED AS PART OF 2023 CUP MODIFICATION. THE SPACES THAT ARE CHANGING FROM B TO E OCCUPANCY WERE ORIGINALLY CALCULATED WITH A 20 NET OLF FOR EDUCATIONAL USE.  
 2. ROOM NAMES & OCCUPANCY UPDATED AS PART OF 2023 CUP MODIFICATION, SEE DETAIL 2 & 3 THIS SHEET.  
 3. UPGRADES TO AUTOMATIC FIRE SPRINKLER SYSTEM AND FIRE ALARM SYSTEM ARE DEFERRED SUBMITTALS AND BIDDER DESIGNED

**LEGEND:**  
 CUP1994-0011 ASHCREEK USE (Blue)  
 FUTURE ASHCREEK USE (Pink)  
 EXISTING RESTROOMS (Cyan)

YGH-INTEGRUS ARCHITECTURE

## LIFE SAFETY CODE SUMMARY

JURISDICTION AUTHORITY: CITY OF BEAVERTON / STATE OF OREGON

UNIFORM BUILDING CODE 1997 EDITION  
 1998 OREGON AMENDMENTS  
 2000 OREGON AMENDMENTS

OCCUPANCY TYPES:  
 A-3 SANCTUARY, FELLOWSHIP HALL  
 B SMALL CAPACITY CLASSROOMS, OFFICES, ETC.  
 E-2 EDUCATION FOR LESS THAN 50 PERSONS

CONSTRUCTION TYPE:  
 EXISTING BUILDING: TYPE V-1 HR (BY AUTOMATIC SPRINKLER SYSTEM, SECTION 508)  
 NEW ADDITION: TYPE V-1 HR (BY AUTOMATIC SPRINKLER SYSTEM, SECTION 508)

ALLOWABLE AREAS:

ONE-STORY BUILDING:	A-3 V-1 HR	B V-1 HR	E-2 V-1 HR
OCCUPANCY:	A-3	B	E-2
BASIC ALLOWABLE AREA (TABLE 5-8):	10,500	14,000	15,700
BASIC ALLOWABLE HEIGHT (TABLE 5-8):	2	3	2
AREA INCREASES - FOR ANY SINGLE LEVEL SEPARATION ON ALL SIDES (505.1.3)	+100%	+100%	+100%
<b>TOTAL ALLOWABLE BUILDING AREA:</b>	<b>21,000</b>	<b>28,000</b>	<b>31,400</b>

TWO-STORY BUILDING:	A-3 V-1 HR	B V-1 HR	E-2 V-1 HR
OCCUPANCY:	A-3	B	E-2
BASIC ALLOWABLE AREA (TABLE 5-8):	10,500	14,000	15,700
BASIC ALLOWABLE HEIGHT (TABLE 5-8):	2	3	2
AREA INCREASES - FOR ANY SINGLE LEVEL SEPARATION ON ALL SIDES (505.1.3)	+100%	+100%	+100%
INCREASE FOR MULTI-STORY BUILDING (504.2):	+100%	+100%	+100%
<b>TOTAL ALLOWABLE BUILDING AREA:</b>	<b>42,000</b>	<b>56,000</b>	<b>62,800</b>

**ALLOWABLE AREA (UPPER LEVEL):**  
 ACTUAL AREA, ONE-STORY (A-3) = 10,692 SF (A-3)  
 ALLOWABLE AREA, ONE-STORY (A-3) = 21,000 SF (A-3) = .51 x 1

**ALLOWABLE AREA (LOWER LEVEL):**  
 ACTUAL AREA, ONE-STORY (B) = 10,190 SF (BUILDING) + 1,184 (COURTYARD) (B) = .41 x 1  
 ALLOWABLE AREA, ONE-STORY (B) = 28,000 SF (B)

**BASEMENT EXCLUDED FROM TOTAL ALLOWABLE AREA (U.B.C. SECTION 504.5):**  
 ACTUAL AREA (B) + ACTUAL AREA (E-2) = 2,486 SF (B) + 237 SF (E-2) = .15 x 1  
 ALLOWABLE AREA (B) = 28,000 SF (B) + 13,400 SF (E-2)

**ALLOWABLE AREA (ENTIRE BUILDING) (U.B.C. SECTION 504.2 & 504.3):**  
 ACTUAL AREA (A-3) + ACTUAL AREA (B) = 10,692 SF (A-3) + 11,374 SF (B) = .45 x 1  
 ALLOWABLE AREA (A-3) = 42,000 SF (A-3) 56,000 SF (B)

**ESTIMATED OCCUPANT LOADS & EGRESS:**

LEVEL	OCC LD	FACTOR	WIDTH	NO. EXITS	WIDTH	EXIT TYPE
UPPER LEVEL	440	x 0.2 =	89 IN	= 3	30 IN	DOORS, CORRIDORS STAIRS
LOWER LEVEL	271	x 0.2 =	55 IN	= 3	19 IN	DOORS, CORRIDORS STAIRS
BASEMENT	100	x 0.2 =	20 IN	= 2	10 IN	DOORS

NOTE: USE EXIT WIDTH CALCULATED OR CODE MINIMUM, WHICHEVER IS GREATER

**TRAVEL DISTANCE:**  
 (U.B.C. SECTION 1004.2.5.2.2) FOR SPRINKLERED BUILDINGS, TRAVEL DISTANCE SHALL NOT EXCEED 250 FT.  
 (U.B.C. SECTION 1004.2.5.2.3) USING A CORRIDOR MAY INCREASE THE TRAVEL DISTANCE UP TO 100 FT.  
 (U.B.C. SECTION 1007.3.3.1) FOR "E" OCCUPANCY, THE TRAVEL DISTANCE FROM ANY POINT IN A ROOM SHALL NOT EXCEED 75 FEET TO A CORRIDOR OR AN EXIT.

**REQUIRED OCCUPANCY SEPARATIONS:**  
 A-3 TO B: NONE  
 A-3 TO E: NONE  
 B TO E: 1 HR

**EXTERIOR WALLS (TABLE 5-A):**  
 TYPE: V-1 HR

TYPE	BEARING	NON-BEARING	OPENINGS
A-3	TWO-HOUR LESS THAN 5' ONE-HOUR ELSEWHERE	TWO-HOUR LESS THAN 5' ONE-HOUR ELSEWHERE	NOT PERMITTED LESS THAN 5' PROTECTED LESS THAN 10'
B	ONE-HOUR	ONE-HOUR	NOT PERMITTED LESS THAN 5' PROTECTED LESS THAN 10'
E-2	TWO-HOUR LESS THAN 5' ONE-HOUR ELSEWHERE	TWO-HOUR LESS THAN 5' ONE-HOUR ELSEWHERE	NOT PERMITTED LESS THAN 5' PROTECTED LESS THAN 10'

**FIRE RESISTIVE RATINGS (UBC 5A & 6A) V-1 HR:**  
 SHAFT ENCLOSURES: 1 HR  
 EXIT ENCLOSURES: 1 HR  
 ALL OTHER BUILDING ELEMENTS: 1 HR, ACHIEVED BY AUTOMATIC SPRINKLER SYSTEM FIRE-RESISTIVE SUBSTITUTION (SECTION 508)

**SANITATION SYSTEMS & PLUMBING FIXTURES:**

LEVEL	AREA - OCC CALCS	REGD MEN	REGD WOMEN	PROVIDED MEN	PROVIDED WOMEN
UPPER LEVEL	GROUP A - WORSHIP PLACE 228 FIXED SEATS = 114M & 114W	1 WC 5 LAV	2 WC 1 LAV		
LOWER LEVEL	GROUP A - WORSHIP PLACE EDUCATIONAL AND ACTIVITY UNIT 4,852 SF @ 30 OCC = 81M & 81W	1 WC 5 LAV	2 WC 1 LAV	2 WC, 2 UR 2 LAV	4 WC 3 LAV
<b>TOTAL:</b>		2 WC 1 LAV	4 WC 2 LAV	2 WC, 2 UR 2 LAV	4 WC 3 LAV
BASEMENT	GROUP A - WORSHIP PLACE EDUCATIONAL AND ACTIVITY UNIT 1,220 SF @ 30 OCC = 22M & 22W	1 WC 5 LAV	1 WC 1 LAV		
	GROUP E - SCHOOL, FOR STUDENT USE 760 SF @ 50 OCC = 8M & 8W	1 WC 5 LAV	1 WC 1 LAV		
<b>TOTAL:</b>		2 WC 1 LAV	2 WC 1 LAV	1 WC, 1 UR 1 LAV	2 WC 1 LAV

\*ONE ADDITIONAL UNI-SEX TOILET AND LAVATORY IS PROVIDED ON THE UPPER LEVEL AND TWO ADDITIONAL UNI-SEX TOILETS AND LAVATORIES ARE PROVIDED ON THE LOWER LEVEL.  
 NOTE: UBC A-29-A: (5) WHERE URINALS ARE PROVIDED, THE NUMBER OF WC'S SHALL NOT BE REDUCED TO LESS THAN 50% OF THE MINIMUM SPECIFIED.

ACCESSIBLE PARKING: (SEE SITE PLAN, SHEET C1.1)  
 PARKING SPACES REQUIRED: N/A  
 PARKING SPACES PROVIDED: 99  
 ACCESSIBLE PARKING SPACES REQUIRED: 4  
 ACCESSIBLE PARKING SPACES PROVIDED: 6

Consultant  
 Architect  
 Owner  
 Project

Murray Hills Christian Church  
 Building Addition

Building Permit Plans Review  
 August 2, 2002

Sheet Title  
 LIFE/SAFETY PLAN  
 Drawing No.  
**A0.31**  
 Scale/16 = 1'-0"  
 Date 06.21.02  
 Project No. 47010